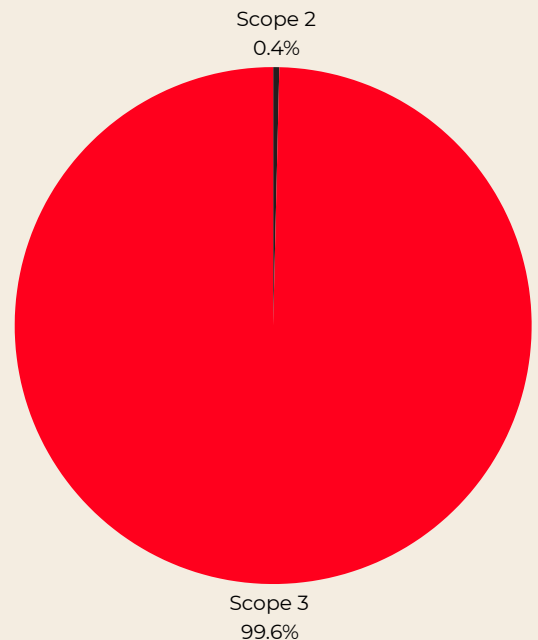




OUR 2023 CARBON FOOTPRINT ASSESSMENT (FY2022)

Total scope 1 emissions (direct emissions) = 0 tCO₂e
Total scope 2 emissions (indirect emissions) = 18 tCO₂e
Total scope 3 (indirect emissions) = 4.748 tCO₂e



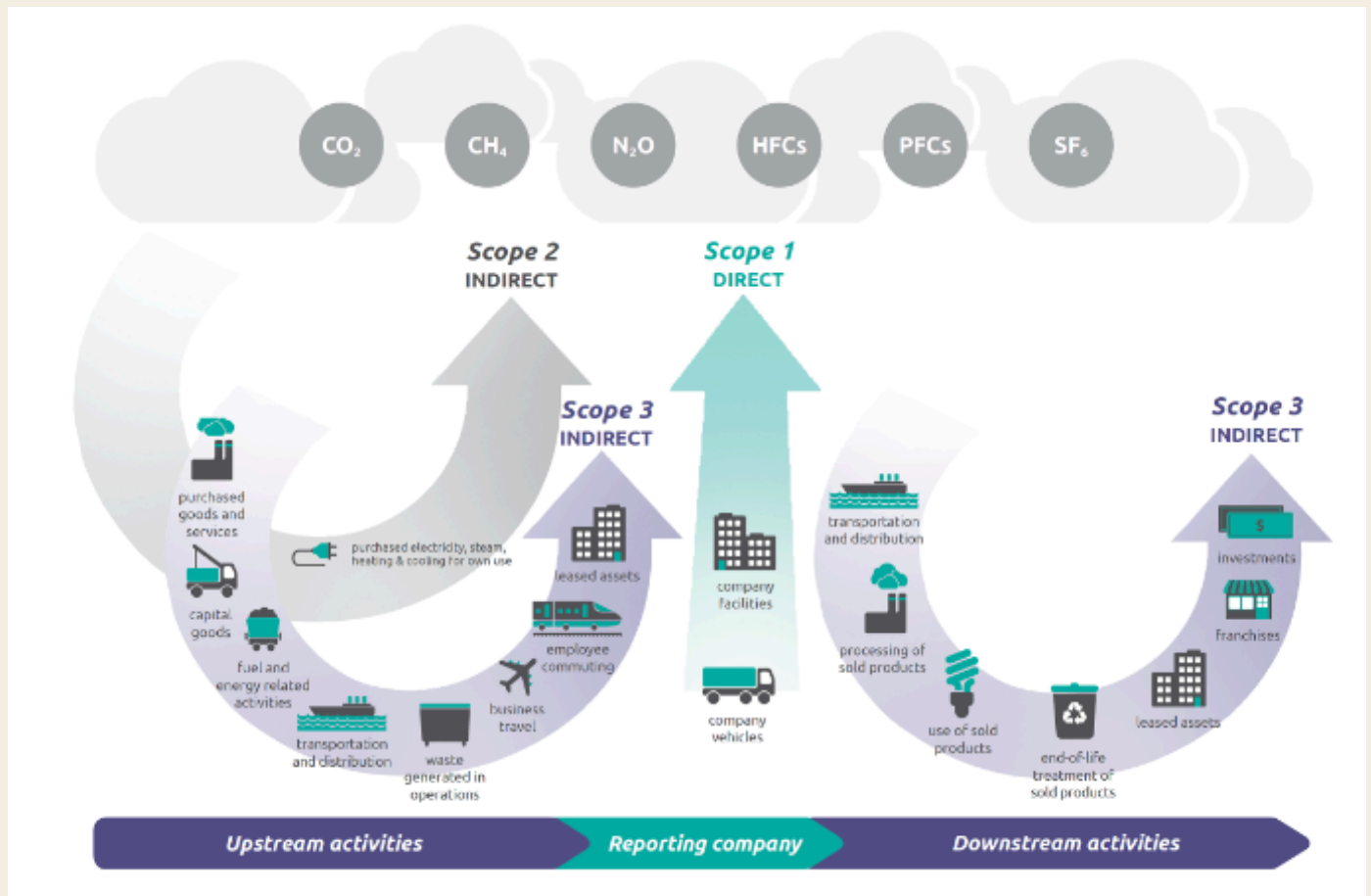
Methodology

The carbon footprint was assessed on the basis of the **GHG Protocol**-an internationally recognized methodology-using an **equity-share approach** (*The company accounts for an entity's GHG emissions at the level of its retention percentage*). It covers **scopes 1, 2 and 3**. This approach was complemented by the methodology developed by the PCAF (Partnership for Carbon Accounting Financials) specific to financed emissions.

All emission factors come from ADEME, IEA, INIES and PCAF databases.



Overview of GHG Protocol scopes and emissions across the value chain



Sources : The GHG Protocol's Corporate Value Chain (Scope 3) Accounting and Reporting Standard (p5)